



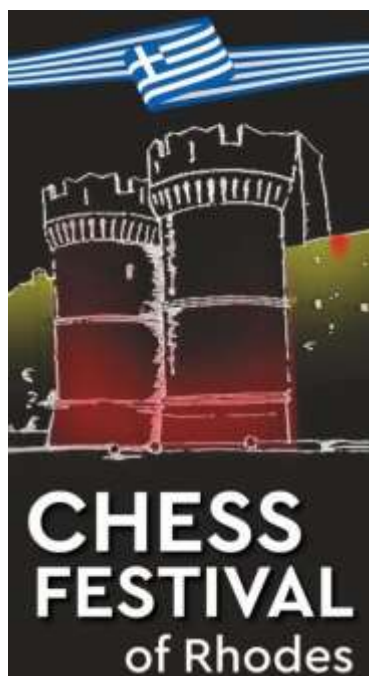
## 2024-25 Grand-Prix

### Final Tournament (Open)

**Prize Fund: 11,000 euros**

**Rhodes island, GREECE // 9 - 19 July 2025**

**Venue: 5-star Rodos Palace Resort**



### INVITATION & INTRODUCTION to RHODES

This is the official invitation to all players with a FIDE ID number to participate in the “**Rhodes WCF Open 2025**”, the Final Tournament of the WCF Grand-Prix Series 2024-25. This event is a great opportunity to combine 5-star summer holidays on a famous Greek island together with an open tournament giving the WCF Champion Title and 11,000 euros in prizes for all categories: general standings, women and juniors! The island of Rhodes is one of the most popular tourist destinations in Europe and it has several nicknames, such as "Island of the Sun", "The Pearl Island" and "The Island of the Knights", named after the Knights of Saint John of Jerusalem, who ruled the island from 1310 to 1522. Rhodes was also famous for the Colossus of Rhodes, one of the Seven Wonders of the Ancient World. The Medieval Old Town of Rhodes has been declared a World Heritage Site.

### 1. Playing Venue

The WCF Grand-Prix Final “Rhodes WCF Open 2025” will be held in the **5-star Conference Hotel “Rodos Palace”**, on the northern seaside of Rhodes. The venue is 10 km away from the island’s international airport (IATA code of the airport: RHO).

### 2. Tournament schedule

<b>09 July 14:00</b> -> Arrival of participants	<b>10 July 10:30</b> -> Technical meeting & <b>15:45</b> Opening Ceremony
<b>10 to 18 July, daily 16:00</b> -> Rounds 1 to 9	<b>18 July 21:30</b> -> Closing Ceremony
<b>19 July, 11:00</b> -> Departure of participants	

### **3. Technical Regulations**

- 3.1 The tournament will be a 9-round Swiss, FIDE rated and open to all players with a FIDE ID number.
- 3.2 The time limit for each player is 90 minutes for 40 moves + 15 minutes for the rest of the game + 30 seconds increment for every move played, starting from the 1<sup>st</sup> move.
- 3.3 A player forfeits the game if he/she hasn't appeared at the board within 30 minutes of starting time.
- 3.4 Tie-break criteria: The final ranking of the players is determined by the number of points scored. If, at the end of the tournament, two or more players tie for 1<sup>st</sup> place or for any place in the standings, the tie shall be broken according to the following criteria for Swiss events, in order of priority:
- i. Results of direct encounters between the tied players  
(applies only if all tied players have played each other).
  - ii. Buchholz Cut 1.
  - iii. Buchholz.
  - iv. The greater number of games played with black.
  - v. The greater number of wins.
- 3.5 The FIDE Anti-Cheating rules and guidelines are valid for this tournament.
- 3.6 Appeals against decisions of the Chief Arbiter must be submitted in written form to the Chairman of the appeals committee within 20 minutes after the completion of the respective game. The protest must be accompanied with 150 €, as a deposit from the signatory. If the appeal is granted, the sum shall be returned immediately. If the appeal is refused, the deposit is forfeited and added to the prize fund as additional amount for the 1<sup>st</sup> place. The decisions of the Appeals Committee are final.

### **4. Prize Fund 11,000 euros (€)**

- |     |                           |                         |       |   |
|-----|---------------------------|-------------------------|-------|---|
| 4.1 | <u>General Standings:</u> | 1 <sup>st</sup> place:  | 3,000 | + 900 ranking points for WCF Champion title   |
|     |                           | 2 <sup>nd</sup> place:  | 2,000 | + 700 ranking points //   |
|     |                           | 3 <sup>rd</sup> place:  | 1,000 | + 500 ranking points //   |
|     |                           | 4 <sup>th</sup> place:  | 800   | + 300 ranking points //   |
|     |                           | 5 <sup>th</sup> place:  | 700   | + 100 ranking points //   |
|     |                           | 6 <sup>th</sup> place:  | 600   |   |
|     |                           | 7 <sup>th</sup> place:  | 500   |   |
|     |                           | 8 <sup>th</sup> place:  | 400   |   |
|     |                           | 9 <sup>th</sup> place:  | 300   |   |
|     |                           | 10 <sup>th</sup> place: | 200   |   |
| 4.2 | <u>Women:</u>             | 1 <sup>st</sup> place:  | 500   | In addition to any prize from General Standings.  |
| 4.3 | <u>WCF Champion:</u>      | 1 <sup>st</sup> place:  | 1,000 | Grant for the next World Championship continental event (point 5.1 of WCF regulations). |

- 4.4 In case of a tie, prizes are divided equally (tie-break criteria do not apply).
- 4.5 A player qualifying for more than one prize(s), receives all of them.
- 4.6 Cup to the 1<sup>st</sup> place winners and medals to the 3 first winners of each category will also be awarded (tie-break criteria apply here).

## **5. Registration cost and deadline**

**OFFICIAL HOTEL: 5-star RODOS PALACE (\*\*\*\*\*)**

### **Registration - Accommodation package includes (per person):**

- Accommodation for 10 nights.
- Breakfast, lunch and dinner daily including potable water (full board).
- All registration & accreditation fees.
- Eligibility for tournament awards and prizes.
- All local taxes, including national tourism tax.

#### **Price in double occupancy room**

**860 euros per person**

#### **Price in single occupancy room**

**1,550 euros per person**

Extra nights can be requested in advance and, upon availability, possible at a proportional cost.

The deadline for registrations and bookings is **19 May 2025**, together with a 30% deposit payment for the selected registration-accommodation package. Kindly note that July is an incredibly busy, high-season period for tourism in Greece. Therefore, it is very possible that the event's capacity may be sold out before the deadline of 19 May. Make sure that you register before the deadline!

## **6. Registration procedure**

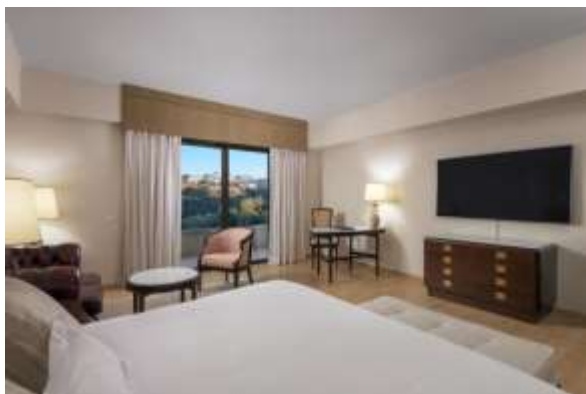
All players, accompanying persons and delegation members have to register before the deadline of **19 May 2025**, together with a 30% deposit payment of the registration package described in article 6 above. After the deadline, a late registration fee of 90 euros per participant may be required. Final payment should be settled before the start of the event.

The complete registration of each person must include the surname/s, first name/s, FIDE ID number, FIDE rating, dates of arrival/departure and passport number (**for visa only purpose**) of each player and each accompanying person. In case of organized delegations, it must also include clearly the name, telephone and e-mail of the Chief of Delegation who must be an adult.

Registrations and bookings for the tournament are possible only through the appointed Organiser in the official hotel and only via application by email: [rodos@worldchessfestival.com](mailto:rodos@worldchessfestival.com)

## **7. Visa information**

Players and accompanying persons who need a visa to enter Greece, are requested to contact the Organizer earlier, before the 19<sup>th</sup> of May 2025. The organizer will provide invitations for visas only after the necessary payments are wired, as described in articles 5 and 6 above. Schengen visas are valid in Greece.



#### **Tournament office / Contact Information**

**Email:** [rodos@worldchessfestival.com](mailto:rodos@worldchessfestival.com)

**Official website:** <https://worldchessfestival.com>